

**MCH Health Problem Analysis for
Broward
Calendar Year 2005**

Population

	Broward		Florida	
	Number	Percentage	Number	Percentage
Total	1,746,603		18,018,497	
White	1,252,926	71.74	14,581,665	80.93
Nonwhite	493,677	28.26	3,436,832	19.07
Black	432,272	24.75	2,949,668	16.37
Other	61,405	3.52	487,164	2.70

Data Source: Population Estimates from the Florida Legislature, Office of Economic & Demographic Research

Births

	Broward		Florida	
	Number	Percentage	Number	Percentage
Total	23,127		226,219	
White *	13,576	58.70	166,181	73.46
Black *	7,868	34.02	47,957	21.20
Other *	1,599	6.91	11,651	5.15
Hispanic **	6,847	29.61	63,757	28.18
Non-Hispanic **	16,209	70.09	161,615	71.44

*Regardless of ethnicity. Does not include persons whose race is unknown.

**Regardless of race. Does not include persons whose ethnicity is unknown.

Data Source: Florida Department of Health, Office of Vital Statistics

Infant Deaths - Actual vs Expected

Total Births	Actual Infant Deaths	Expected Infant Deaths	Significance
23,127	144	202.60	L
		Actual Infant Death Rate per 1,000 Births	Expected Infant Death Rate per 1,000 Births
		6.23	8.76

H=Actual Rate is Significantly Higher than the Expected Rate

L=Actual Rate is Significantly Lower than the Expected Rate

N=Actual Rate is Not Significantly Different than the Expected Rate

Data Source: Department of Health - Infant, Maternal and Reproductive Health using Florida Vital Statistics data

Low Birthweight - Actual vs Expected

Total Births	Actual LBW Births	Expected LBW Births	Significance
23,127	2,142	2,202.20	N
		Actual Percent LBW	Expected Percent LBW
		9.26	9.52

H=Actual Rate is Significantly Higher than the Expected Rate

L=Actual Rate is Significantly Lower than the Expected Rate

N=Actual Rate is Not Significantly Different than the Expected Rate

Data Source: Department of Health - Infant, Maternal and Reproductive Health using Florida Vital Statistics data

MCH Health Problem Analysis for Broward Calendar Year 2005

Deaths Due to Leading Causes of Infant Mortality

Perinatal Conditions	71	Unintentional Injury	6
Congenital Anomalies	32	Heart Disease	1
Sudden Infant Death Syndrome	6	Other Causes	28

Data Source: Florida Department of Health, Office of Vital Statistics

Infant Mortality

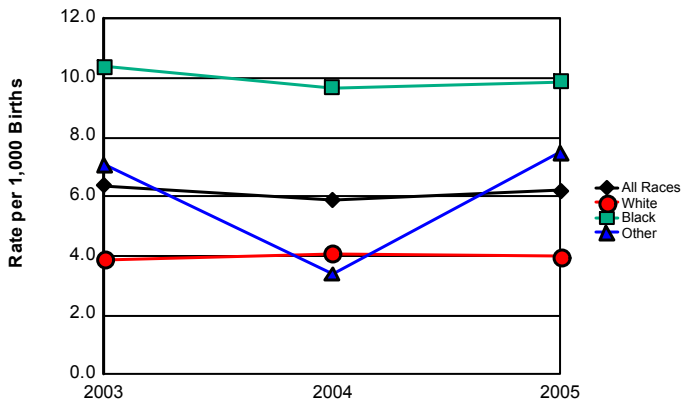
	2003		2004		2005		Comparison to Previous Year	Comparison to Florida Rate
	Broward	Florida	Broward	Florida	Broward	Florida		
Total	143	1,584	135	1,536	144	1,626	Increased	
Rate per 1000	6.4	7.5	5.9	7.0	6.2	7.2	Increased	Below
White *	54	907	55	876	54	882	Decreased	
Rate per 1000	3.9	5.8	4.1	5.5	4.0	5.3	Decreased	Below
Black *	81	647	75	621	78	652	Increased	
Rate per 1000	10.4	13.7	9.7	13.2	9.9	13.6	Increased	Below
Other *	7	27	5	38	12	91	Increased	
Rate per 1000	7.1	3.6	3.4	3.6	7.5	7.8	Increased	Below
Hispanic **	23	273	19	242	34	373	Increased	
Rate per 1000	3.9	5.0	3.0	4.1	5.0	5.9	Increased	Below
Non-Hispanic **	118	1,256	112	1,244	110	1,246	Decreased	
Rate per 1000	7.1	8.0	6.8	7.8	6.8	7.7	Same	Below

* Regardless of ethnicity. Does not include persons whose race is unknown.

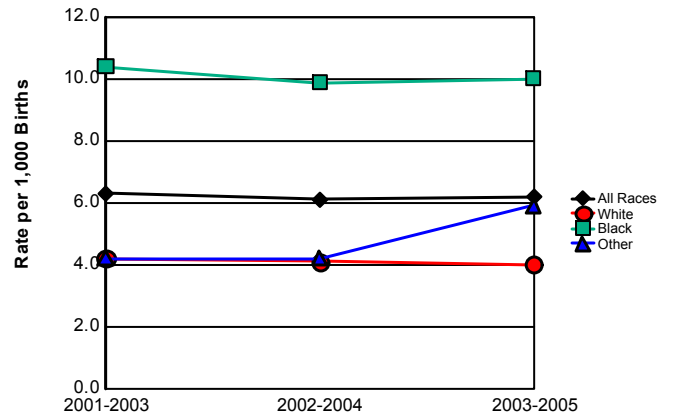
** Regardless of race. Does not include persons whose ethnicity is unknown.

Data Source: Florida Department of Health, Office of Vital Statistics

Infant Mortality Rates



**Infant Mortality Trend
Three-Year Rolling Averages**



	2003	2004	2005
All Races	6.4	5.9	6.2
White	3.9	4.1	4.0
Black	10.4	9.7	9.9
Other	7.1	3.4	7.5

	2001-2003	2002-2004	2003-2005
All Races	6.3	6.1	6.2
White	4.2	4.1	4.0
Black	10.4	9.9	10.0
Other	4.2	4.2	5.9

MCH Health Problem Analysis for Broward Calendar Year 2005

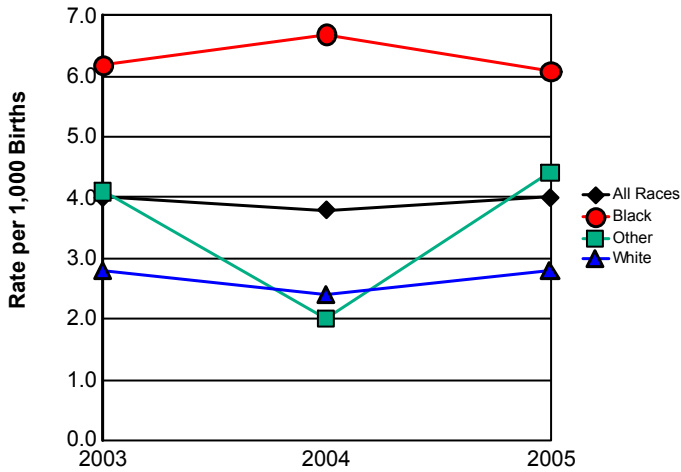
Neonatal Mortality

	2003		2004		2005		Comparison to Previous Year	Comparison to Florida Rate
	Broward	Florida	Broward	Florida	Broward	Florida		
Total	91	1,025	88	989	93	1,024	Increased	
Rate per 1000	4.0	4.8	3.8	4.5	4.0	4.5	Increased	Below
White *	38	584	33	563	38	544	Increased	
Rate per 1000	2.8	3.7	2.4	3.5	2.8	3.3	Increased	Below
Black *	48	420	52	401	48	422	Decreased	
Rate per 1000	6.2	8.9	6.7	8.5	6.1	8.8	Decreased	Below
Other *	4	18	3	24	7	57	Increased	
Rate per 1000	4.1	2.4	2.0	2.3	4.4	4.9	Increased	Below
Hispanic **	16	186	11	146	23	245	Increased	
Rate per 1000	2.7	3.4	1.7	2.5	3.4	3.8	Increased	Below
Non-Hispanic **	74	792	74	801	70	773	Decreased	
Rate per 1000	4.5	5.0	4.5	5.0	4.3	4.8	Decreased	Below

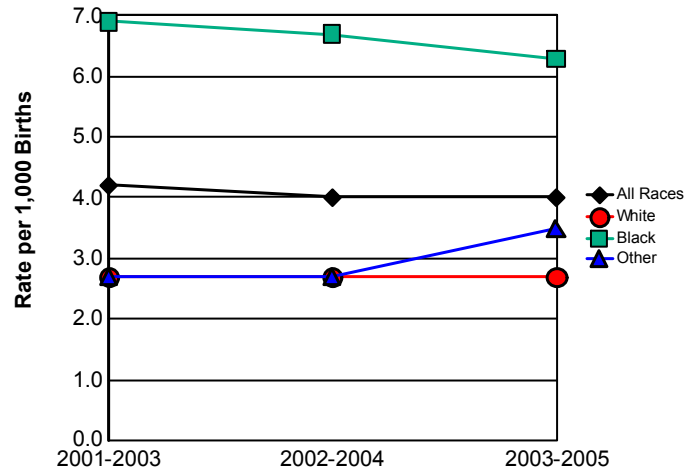
*Regardless of ethnicity. Does not include persons whose race is unknown.
**Regardless of race. Does not include persons whose ethnicity is

Data Source: Florida Department of Health, Office of Vital Statistics

Neonatal Mortality Rates



Neonatal Mortality Trend Three-Year Rolling Averages



	2003	2004	2005
All Races	4.0	3.8	4.0
White	2.8	2.4	2.8
Black	6.2	6.7	6.1
Other	4.1	2.0	4.4

	2001-2003	2002-2004	2003-2005
All Races	4.2	4.0	4.0
White	2.7	2.7	2.7
Black	6.9	6.7	6.3
Other	2.7	2.7	3.5

MCH Health Problem Analysis for Broward Calendar Year 2005

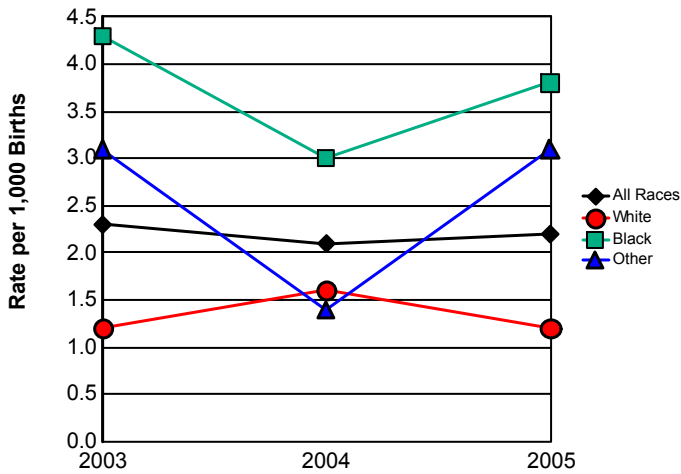
Postneonatal Mortality

	2003		2004		2005		Comparison to Previous Year	Comparison to Florida Rate
	Broward	Florida	Broward	Florida	Broward	Florida		
Total	52	559	47	547	51	602	Increased	
Rate per 1000	2.3	2.6	2.1	2.5	2.2	2.7	Increased	Below
White *	16	323	22	313	16	338	Decreased	
Rate per 1000	1.2	2.1	1.6	2.0	1.2	2.0	Decreased	Below
Black *	33	227	23	220	30	230	Increased	
Rate per 1000	4.3	4.8	3.0	4.7	3.8	4.8	Increased	Below
Other *	3	9	2	14	5	34	Increased	
Rate per 1000	3.1	1.2	1.4	1.3	3.1	2.9	Increased	Above
Hispanic **	7	87	8	96	11	128	Increased	
Rate per 1000	1.2	1.6	1.3	1.6	1.6	2.0	Increased	Below
Non-Hispanic **	44	464	38	443	40	473	Increased	
Rate per 1000	2.7	3.0	2.3	2.8	2.5	2.9	Increased	Below

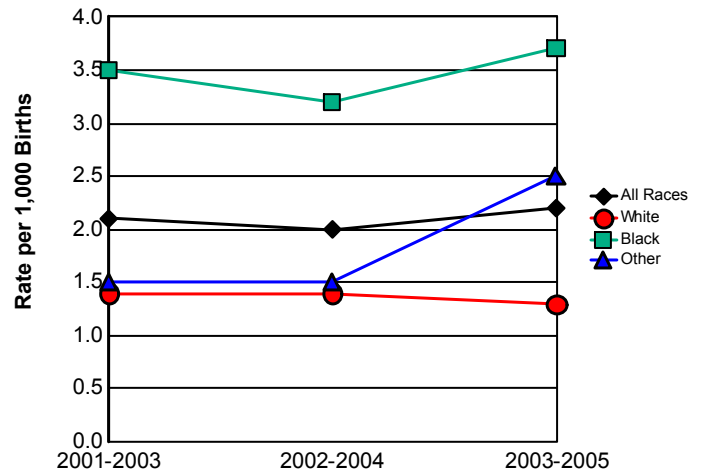
*Regardless of ethnicity. Does not include persons whose race is unknown.
 ** Regardless of race. Does not include persons whose ethnicity is unknown.

Data Source: Florida Department of Health, Office of Vital Statistics

Postneonatal Mortality Rates



Postneonatal Mortality Trend Three-Year Rolling Averages



	2003	2004	2005
All Races	2.3	2.1	2.2
White	1.2	1.6	1.2
Black	4.3	3.0	3.8
Other	3.1	1.4	3.1

	2001-2003	2002-2004	2003-2005
All Races	2.1	2.0	2.2
White	1.4	1.4	1.3
Black	3.5	3.2	3.7
Other	1.5	1.5	2.5

MCH Health Problem Analysis for Broward Calendar Year 2005

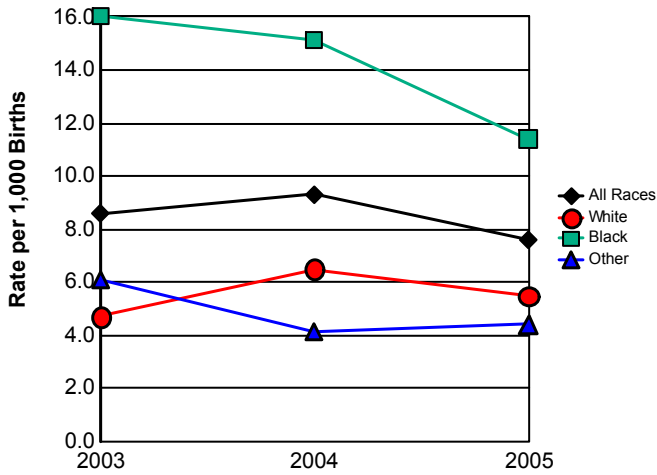
Fetal Mortality

	2003		2004		2005		Comparison to Previous Year	Comparison to Florida Rate
	Broward	Florida	Broward	Florida	Broward	Florida		
Total	194	1,604	212	1,701	176	1,650	Decreased	
Rate per 1000	8.6	7.6	9.3	7.8	7.6	7.3	Decreased	Above
White *	64	912	88	966	75	938	Decreased	
Rate per 1000	4.7	5.8	6.5	6.0	5.5	5.6	Decreased	Below
Black *	124	643	117	680	90	649	Decreased	
Rate per 1000	16.0	13.6	15.1	14.5	11.4	13.5	Decreased	Below
Other *	6	35	6	43	7	39	Increased	
Rate per 1000	6.1	4.7	4.1	4.1	4.4	3.3	Increased	Above
Hispanic **	36	264	44	328	37	309	Decreased	
Rate per 1000	6.1	4.8	6.9	5.6	5.4	4.8	Decreased	Above
Non-Hispanic **	154	1,220	156	1,243	125	1,172	Decreased	
Rate per 1000	9.3	7.8	9.5	7.8	7.7	7.3	Decreased	Above

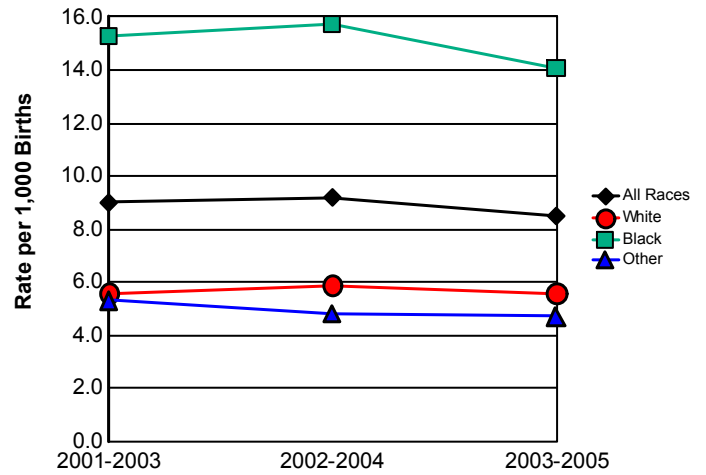
* Regardless of ethnicity. Does not include persons whose race is unknown.

Data Source: Florida Department of Health, Office of Vital Statistics

Fetal Mortality Rates



Fetal Mortality Trend Three-Year Rolling Averages



	2003	2004	2005
All Races	8.6	9.3	7.6
White	4.7	6.5	5.5
Black	16.0	15.1	11.4
Other	6.1	4.1	4.4

	2001-2003	2002-2004	2003-2005
All Races	9.0	9.2	8.5
White	5.6	5.9	5.6
Black	15.3	15.7	14.1
Other	5.3	4.8	4.7

MCH Health Problem Analysis for Broward Calendar Year 2005

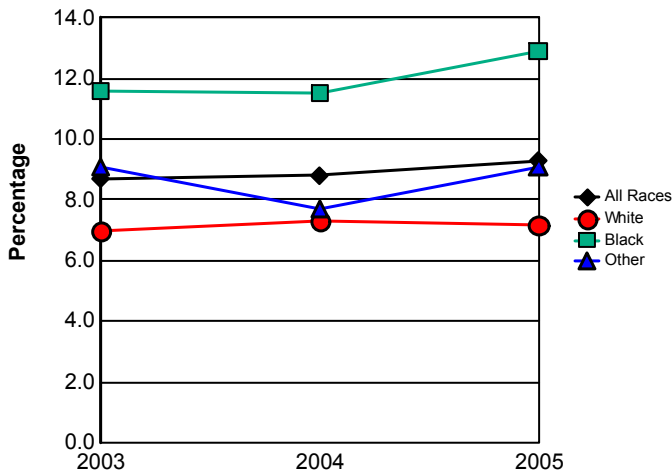
Low Birthweight

	2003		2004		2005		Comparison to Previous Year	Comparison to Florida Rate
	Broward	Florida	Broward	Florida	Broward	Florida		
Total	1,955	18,047	2,007	18,670	2,142	19,802	Increased	
Percentage	8.7	8.5	8.8	8.6	9.3	8.8	Increased	Above
White *	961	11,190	987	11,570	977	12,221	Decreased	
Percentage	7.0	7.1	7.3	7.2	7.2	7.4	Decreased	Below
Black *	903	6,203	897	6,134	1,012	6,521	Increased	
Percentage	11.6	13.2	11.5	13.1	12.9	13.6	Increased	Below
Other *	89	624	114	923	146	1,025	Increased	
Percentage	9.1	8.4	7.7	8.8	9.1	8.8	Increased	Above
Hispanic **	418	3,795	435	4,100	463	4,493	Increased	
Percentage	7.0	6.9	6.9	7.0	6.8	7.0	Decreased	Below
Non-Hispanic **	1,534	14,212	1,558	14,459	1,670	15,210	Increased	
Percentage	9.3	9.0	9.5	9.1	10.3	9.4	Increased	Above

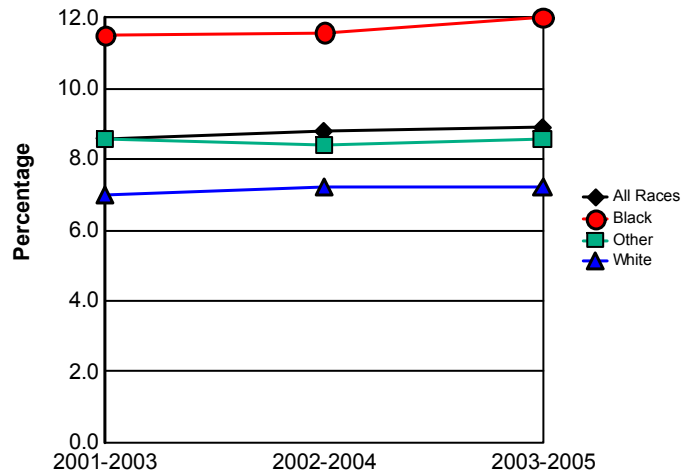
* Regardless of ethnicity. Does not include persons whose race is unknown.

Data Source: Florida Department of Health, Office of Vital Statistics

Percentage of Low Birthweight Births



Low Birthweight Births Trend Three-Year Rolling Averages



	2003	2004	2005
All Races	8.7	8.8	9.3
White	7.0	7.3	7.2
Black	11.6	11.5	12.9
Other	9.1	7.7	9.1

	2001-2003	2002-2004	2003-2005
All Races	8.6	8.8	8.9
White	7.0	7.2	7.2
Black	11.5	11.6	12.0
Other	8.6	8.4	8.6

MCH Health Problem Analysis for Broward Calendar Year 2005

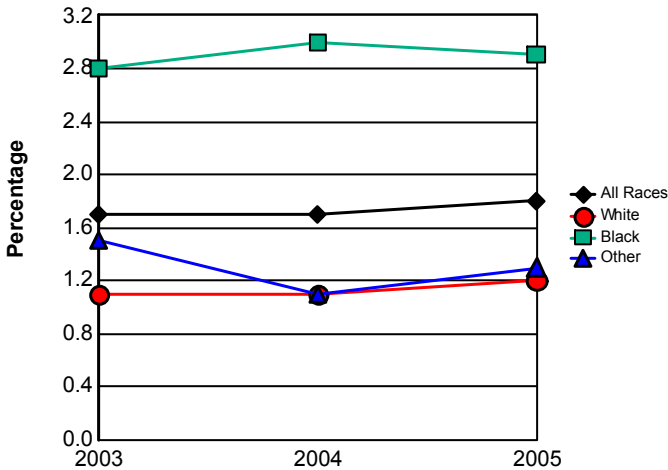
Very Low Birthweight

	2003		2004		2005		Comparison to Previous Year	Comparison to Florida Rate
	Broward	Florida	Broward	Florida	Broward	Florida		
Total	382	3,319	398	3,491	417	3,637	Increased	
Percentage	1.7	1.6	1.7	1.6	1.8	1.6	Increased	Above
White *	152	1,841	149	1,862	162	1,960	Increased	
Percentage	1.1	1.2	1.1	1.2	1.2	1.2	Increased	Same
Black *	215	1,365	232	1,470	231	1,507	Decreased	
Percentage	2.8	2.9	3.0	3.1	2.9	3.1	Decreased	Below
Other *	15	103	16	139	21	162	Increased	
Percentage	1.5	1.4	1.1	1.3	1.3	1.4	Increased	Below
Hispanic **	0	0	0	0	0	0	Same	
Percentage	0.0	0.0	0.0	0.0	0.0	0.0	Same	Same
Non-Hispanic **	305	2,621	318	2,775	335	2,826	Increased	
Percentage	1.8	1.7	1.9	1.7	2.1	1.7	Increased	Above

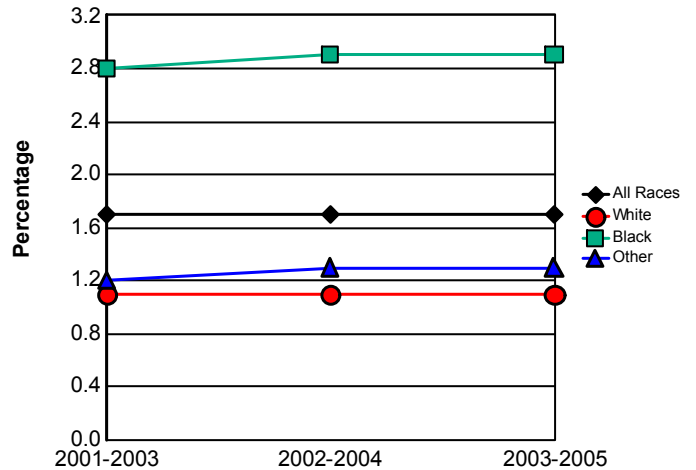
*Regardless of ethnicity. Does not include persons whose race is unknown.

Data Source: Florida Department of Health, Office of Vital Statistics

Percentage of Very Low Birthweight Births



**Very Low Birthweight Trend
Three-Year Rolling Averages**



	2003	2004	2005
All Races	1.7	1.7	1.8
White	1.1	1.1	1.2
Black	2.8	3.0	2.9
Other	1.5	1.1	1.3

	2001-2003	2002-2004	2003-2005
All Races	1.7	1.7	1.7
White	1.1	1.1	1.1
Black	2.8	2.9	2.9
Other	1.2	1.3	1.3

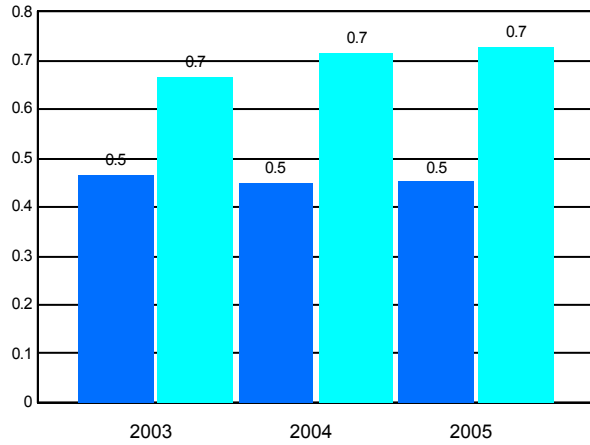
MCH Health Problem Analysis for Broward Calendar Year 2005

Births to Teens

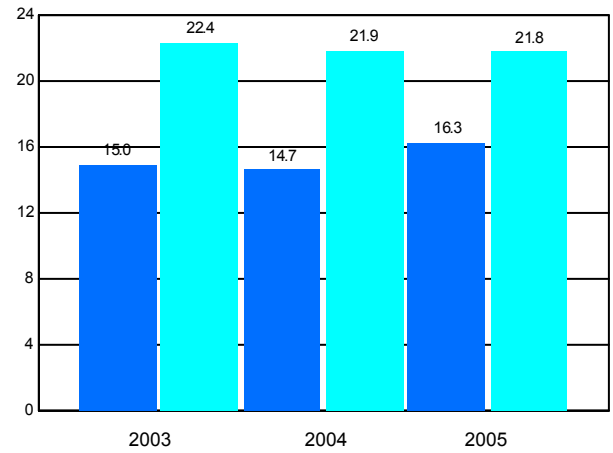
	2003		2004		2005		Comparison to Previous
	Broward	Florida	Broward	Florida	Broward	Florida	
Mothers 10-14							
Number	26	362	26	404	26	415	
Rate per 1,000	0.5	0.7	0.5	0.7	0.5	0.7	Same
Mothers 15-17							
Number	479	7,227	513	7,436	557	7,590	
Rate per 1,000	15.0	22.4	14.7	21.9	16.3	21.8	Increased
Percentage of Repeat Births 15-19	14.0	15.2	13.1	15.4	13.7	16.1	Increased

Data Source: Florida Department of Health, Office of Vital Statistics

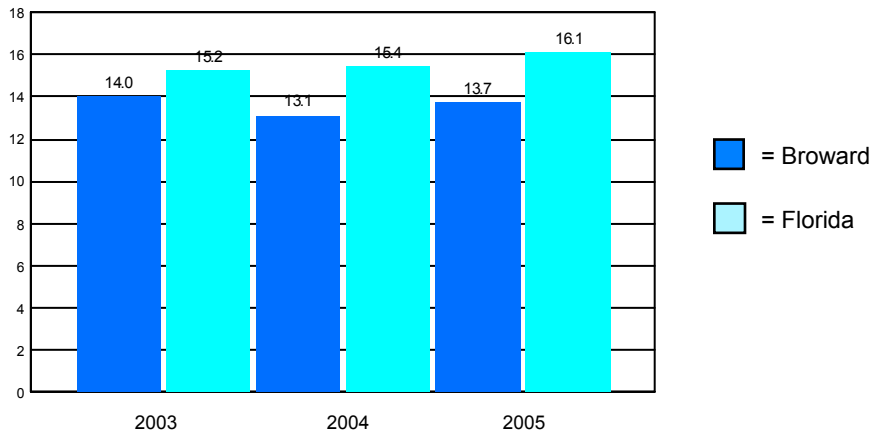
Births to Teens 10-14



Births to Teens 15-17



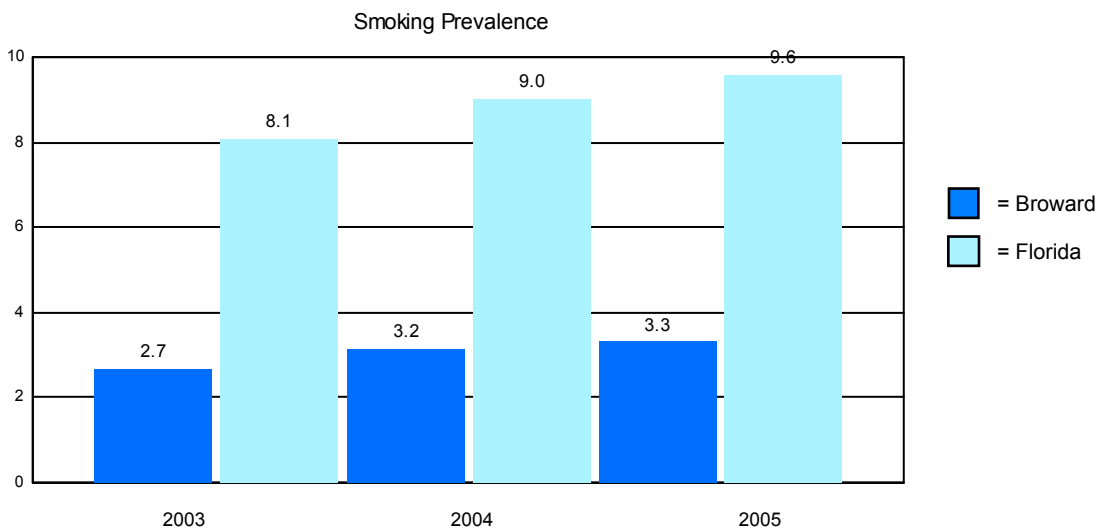
Repeat Births to Teens 15-19



MCH Health Problem Analysis for Broward Calendar Year 2005

Reported Smoking Prevalence in Pregnancy

	Mothers Who Smoked	Percentage of Births
2003		
Broward	604	2.69
Florida	17,165	8.09
2004		
Broward	723	3.16
Florida	19,668	9.02
2005		
Broward	767	3.32
Florida	21,687	9.59



Data Source: Florida Department of Health, Office of Vital Statistics

Pediatric AIDS Cases Among Persons 0 - 4 Years of Age

	2003	2004	2005
Broward	2	2	1
Florida	17	11	6

Data Source: Florida Department of Health, Bureau of HIV/AIDS

CHD Prenatal Care Clients Offered HIV Testing

2003		2004		2005	
Broward	Florida	Broward	Florida	Broward	Florida
0.00%	86.33%	0.00%	86.34%	0.00%	83.60%

MCH Health Problem Analysis for Broward Calendar Year 2005

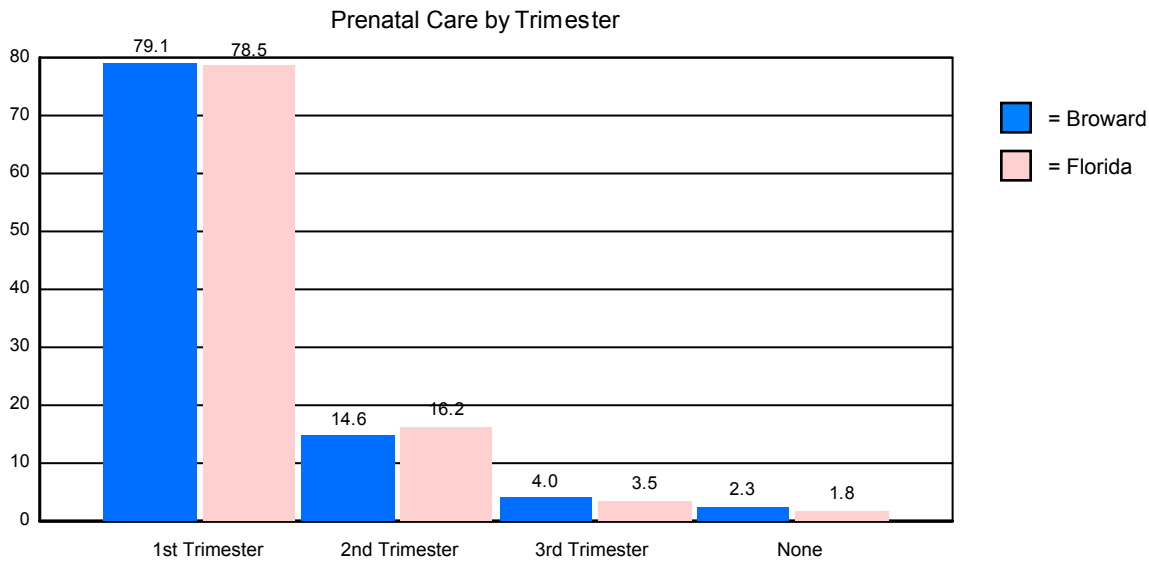
WIC Services

	Persons Eligible for WIC	Percentage Served by WIC
2003		
Broward	43,564	48.43
Florida	550,426	60.72
2004		
Broward	46,305	48.39
Florida	538,421	64.27
2005		
Broward	46,689	50.35
Florida	556,140	67.27

Data Source: Florida Department of Health, WIC & Nutrition Services

Prenatal Care by Trimester of Pregnancy

	1st Trimester	2nd Trimester	3rd Trimester	No Prenatal Care
Broward	79.05%	14.64%	4.00%	2.30%
Florida	78.54%	16.19%	3.50%	1.76%



Data Source: Florida Department of Health, Office of Vital Statistics

Immunizations Among 2-Year-Old CHD Clients

	Number Immunized		Percentage Immunized	
	Broward	Florida	Broward	Florida
2003	516	16,675	32.19	64.22
2004	537	18,481	59.27	80.17
2005	367	16,750	86.97	86.02

Data Source: Florida Department of Health, Bureau of Immunizations

**MCH Health Problem Analysis for
Broward
Calendar Year 2005**

Healthy Start Prenatal Screening and Services

	2003		2004		2005	
	Broward	Florida	Broward	Florida	Broward	Florida
Offered Rate %	66.91	85.76	72.06	87.41	76.72	91.17
Screening Rate %	41.09	51.24	49.45	59.73	57.48	67.36
Consent Rate %	61.41	59.74	68.63	68.33	74.92	73.89

	Number		Percentage	
	Broward	Florida	Broward	Florida
Estimated Number of Pregnant Women	23,076	225,115		
Offered Screen	17,705	205,231	76.72	91.17
Consenting to Screen	13,264	151,646	74.92	73.89
Positive Screen + Referred	8,034	96,528	60.57	63.65
Consenting to HS Participation	7,521	91,004	93.61	94.28
Received Initial Contact	2,608	57,381	34.68	63.05
Need Initial Assessment	1,588	33,073	60.89	57.64
Received Initial Assessment	1,242	30,335	78.21	91.72
Need Ongoing Care Coordination	939	32,861	36.00	57.27

	Broward			Florida	
	Clients	Percentage of Clients	Encounters per Client	Services per Encounter	Percentage of Clients
Total Receiving HS Prenatal Service	7,299		3.88	3.15	
Total IC/IA Only	1,634	22.39	3.22	2.60	17.58
Total IC/IA/Other HS Service	242	3.32	3.62	5.54	5.44
Track or Not Face-to-Face	654	8.96	5.48	3.39	18.49
Face-to-Face, without FSP	558	7.64	8.50	4.61	15.55
Face-to-Face, with FSP	309	4.23	10.41	4.98	3.89
Unable to Locate	1,601	21.93	3.70	2.01	12.97
Unable to Complete Initial Contact	1,643	22.51	2.14	1.97	15.83
Unable to Complete Initial Assessment	8	0.11	2.38	2.63	0.21

	Broward		
	Clients	Services	Services/Client
Nutritional Assessment and Counseling	120	2,411	20.09
Psychosocial Counseling	122	4,524	37.08
Parenting Education	356	3,000	8.43
Childbirth Education	743	10,880	14.64
Breastfeeding Education	451	3,142	6.97
Smoking Cessation Counseling	26	60	2.31
Interconceptional Education & Counseling	54	127	2.35

Pregnant Drug-Abusing Women

	Clients	Encounters/Client	Services/Encounter
Broward	768	4.57	2.65
Florida	4,271	7.30	3.80

**MCH Health Problem Analysis for
Broward
Calendar Year 2005**

Healthy Start Infant Screening and Services

	2003		2004		2005	
	Broward	Florida	Broward	Florida	Broward	Florida
Screening Rate %	69.19	70.85	63.48	69.62	62.84	72.94

	Number		Percentage	
	Broward	Florida	Broward	Florida
Total Number of Births	23,076	225,115		
Consenting to Screen	14,501	164,203	62.84	72.94
Positive Screen + Referred	2,442	24,124	16.84	14.69
Consenting to HS Participation	2,143	20,697	87.76	85.79
Received Initial Contact	1,153	31,048	53.80	150.01
Need Initial Assessment	711	16,973	61.67	54.67
Received Initial Assessment	578	15,732	81.29	92.69
Need Ongoing Care Coordination	423	15,590	36.69	50.21

	Broward			Florida
	Clients	Percentage of Clients	Encounters per Client	Percentage of Clients
Total Receiving HS Infant Service	4,321		3.37	
Total IC/IA Only	704	16.29	3.03	18.99
Total IC/IA/Other HS Service	157	3.63	4.80	3.55
Track or Not Face-to-Face	398	9.21	4.33	14.16
Face-to-Face, without FSP	297	6.87	7.85	13.43
Face-to-Face, with FSP	187	4.33	9.05	4.72
Unable to Locate	772	17.87	3.41	7.50
Unable to Complete Initial Contact	1,323	30.62	1.91	26.86
Unable to Complete Initial Assessment	4	0.09	1.00	0.21

	Broward		
	Clients	Services	Services/Client
Nutritional Assessment and Counseling	36	658	18.28
Psychosocial Counseling	61	1,952	32.00
Parenting Education	422	8,366	19.82
Childbirth Education	0	0	0.00
Breastfeeding Education	58	323	5.57
Smoking Cessation Counseling	9	15	1.67
Interconceptional Education & Counseling	34	71	2.09

Substance-exposed Newborns

	Clients	Encounters/Client	Services/Encounter
Broward	266	5.32	3.39
Florida	3,819	11.32	3.91